

# 101

What every screen-printer needs to know about...

## CorelDraw and **spot colors**

Spot Colors are a screen-printer's best friend. Understand the differences between spot color and process color is critical to your success as a screen-printer.

The CorelDraw software manual may not give the industry specific instructions a screen-printer needs to prepare a graphics file for spot color creation, separation and output BUT the great news is the program has everything you need to get the job done easily and accurately.



If you are changing all of your colors to black, for example, just to output files or get unwanted or unexpected results then you are wasting valuable time. Time is money. Read on to learn how friendly spot colors are to a screen-printer and how to increase your job turnaround rate while reducing costly downtime...

**Newsletter for Screen Printers**



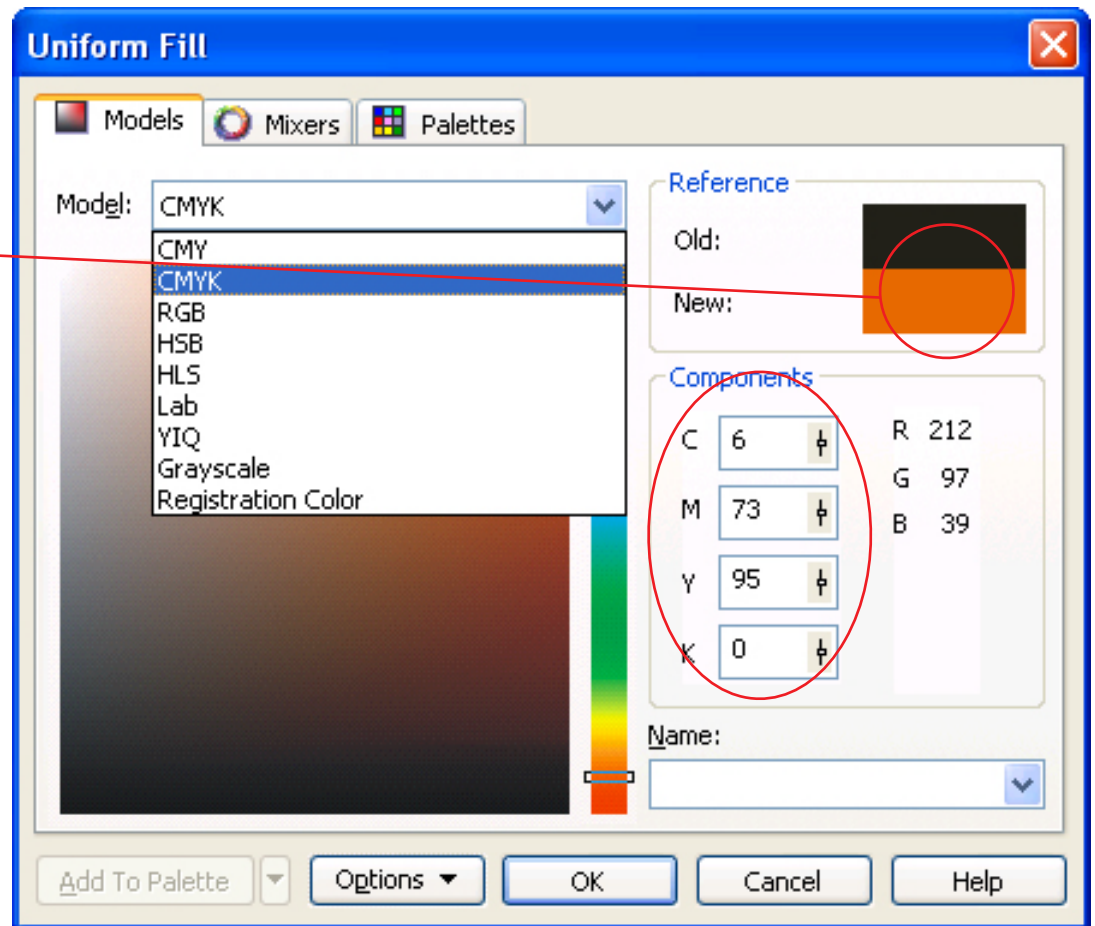
# CorelDRAW® and spot colors

How do you know if this is a spot color?  
And, does it matter? **ABSOLUTELY!**

This may look like a spot color but it is actually made up of a mixture of cyan (6%), Magenta (73%), and Yellow (95%) making it a process color (for 4-color process printing).

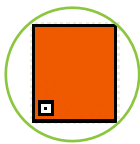
As it is now, you **can't** output this process color as "ONE SPOT COLOR" to a single sheet of film. Upon output - three films (cyan, magenta and yellow) will print and they will also be made of halftones requiring process inks and not specific solid

colors. Use of cmyk or any of these other color models listed above to create a color swatch will result in 4-color process, halftone separations requiring multiple films and screens.

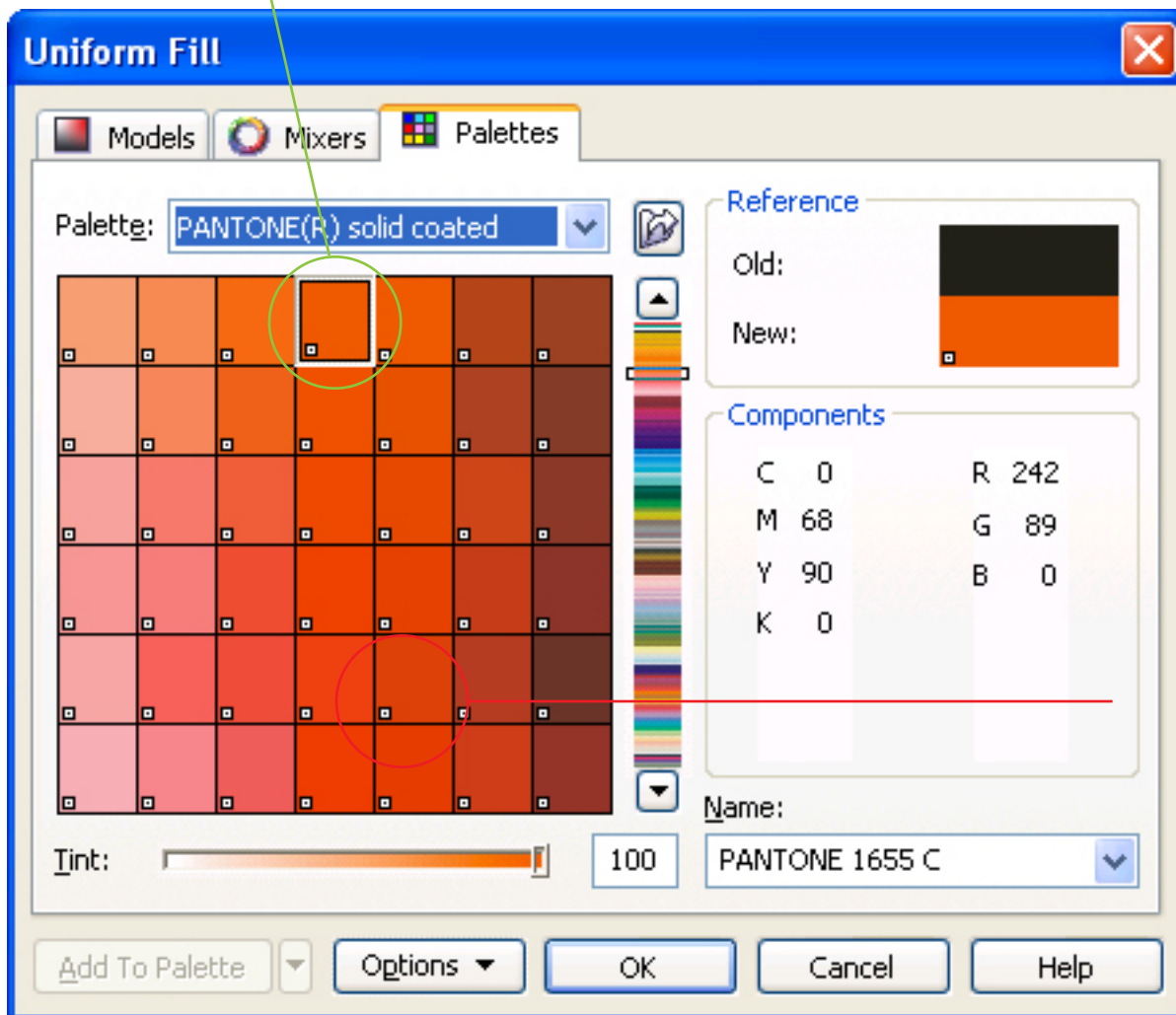


Read on to see what a spot color swatch looks like and how to work with SPOT COLORS. Spot colors print clean and sharp - and only create halftones when tinted, shaded, faded or used in a fountain fill blend. Other than that, all spot colors regardless of their actual color on screen will output as solid black to your film when at 100% Tint (see bottom of Uniform Fill window on next page).

This color is a true “SPOT COLOR”. When a color is a SPOT COLOR the swatch has a very small white box with a black dot in it. Work with SPOT COLORS when you are NOT creating a “4-color process” job for process printing.



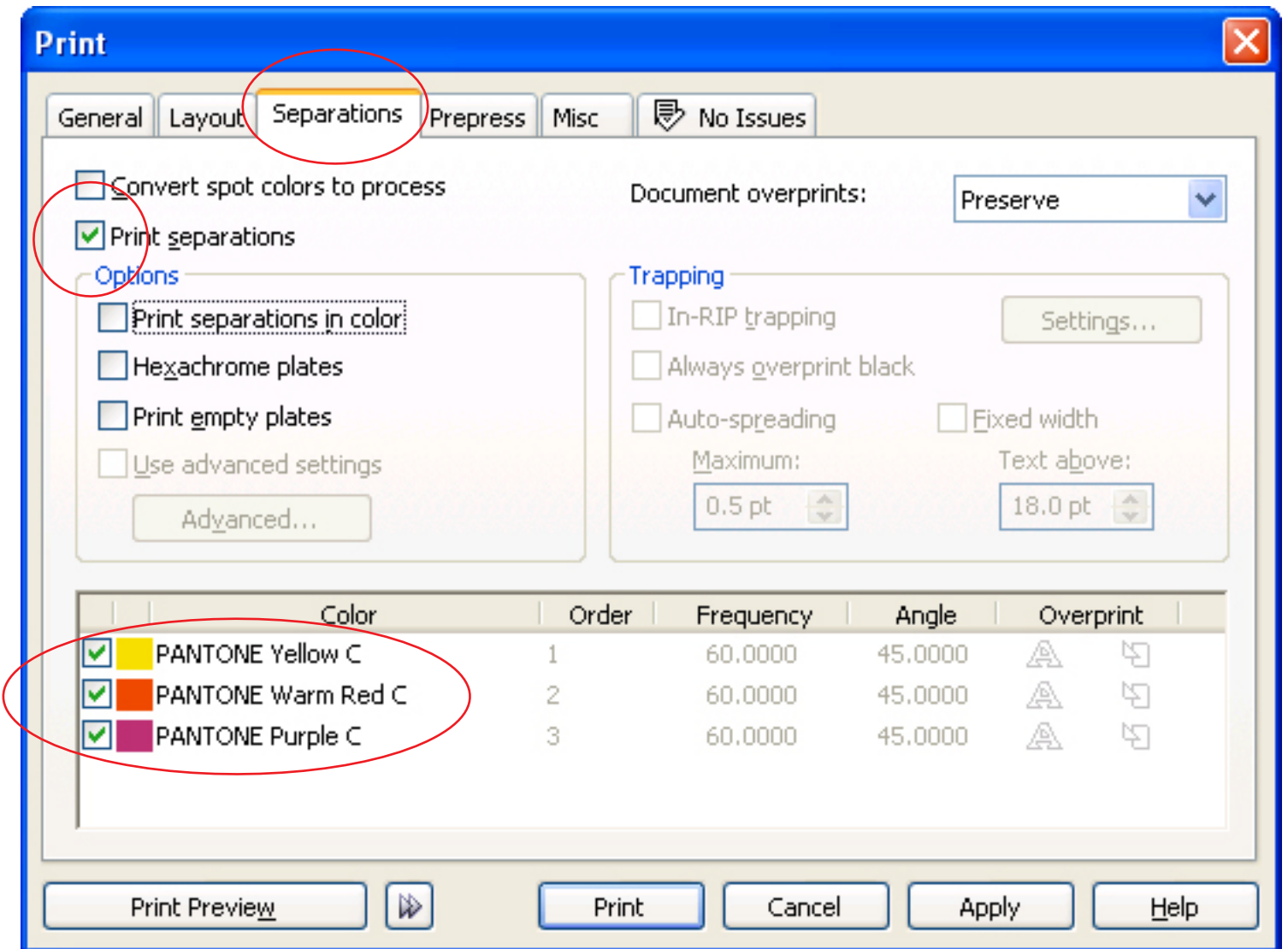
This symbol represents a spot color when working in CorelDraw.



The Pantone Library are “spot colors” and are great to work with. CorelDraw also allows you to custom mix spot colors as well. Refer to your User Manual for more details.

**IMPORTANT:** When you are ready to output your separations – choose PRINT. In the print window go to the SEPARATIONS tab. Check “Print Separations”. You will see the spot colors in your file listed below. Check (select) the colors you wish to output.

From the Corel file you can custom create registration marks and color them with the color REGISTRATION (looks like a registration mark). Elements automatically and universally appear on every spot color film output!



CorelDraw is a great program for screen-printers and use